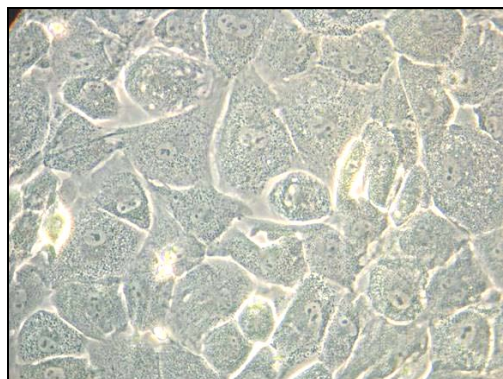


PROMETHERA® HEPASCREEN AN HEPATOCYTE-LIKE CELL FOR METABOLIC EVALUATION OF NCEs



Promethera® Biosciences, a spin-off company of the Université catholique de Louvain, presents a new hepatocyte-like cell *in vitro* model.



Technology Keywords

- Hepatocyte-like cells
- Liver derived progenitor cells
- *in vitro* screening

The company

Promethera® Biosciences is a biopharmaceutical company that develops innovative products based on allogeneic adult stem cell technology.

Promethera® Biosciences develops two products based on a newly discovered and patented progenitor cell type: the human Adult Liver-Derived Mesenchymal Progenitor Cell (hALDMPC):

- **Promethera® HepaStem**, a unique cell therapy product, to treat severe diseases of the liver affecting children and adults.
- **Promethera® HepaScreen**, a cell model designed for the discovery and pre-clinical evaluation of new chemical entities.

Promethera® Biosciences was founded in 2009 by Sopartec sa, the technology transfer office of the UCL and Professor Etienne Sokal, a leading expert in hepatology and cell therapy.

Promethera® HepaScreen: cell model for drug metabolism & toxicity

Promethera® HepaScreen is constituted of **hepatocyte-like cells** originated from *in vitro* differentiated human Adult Liver-derived Progenitor Cells (hALDMPCs).

When differentiated *in vitro*, these cells are adopting several key characteristics of mature adult hepatocytes, **without any genetic modifications**, such as the induced expression of specific hepatic markers and the exhibition of metabolic functions. Notably, the cells express one of the main metabolic enzyme families, the **cytochrome P450 enzymes**. In addition, the acquired *in vitro* differentiation properties are preserved for several days allowing the analysis of both acute and chronic drug metabolism and xenobiotic screening.

Besides these properties, the initial hALDMPC populations are **easily expanded and cultured *in vitro*** and are **resistant to cryopreservation** allowing **schedulable availability and use**.

The Promethera® HepaScreen product will offer the biopharmaceutical industry an interesting tool for pharmaco-toxicology screening of new drugs and lead compound optimization.

Technology Status

Promethera® Biosciences is seeking for companies interested by the evaluation of its Promethera® Hepascreen product as a new *in vitro* tool for metabolic evaluation of NCEs.

Representative References

1. Najimi et al. Cell Transplant 2007, 16(7), 717-28

Sopartec and Promethera® Biosciences would like to enter into discussion with companies interested in developing and commercializing this opportunity.

| | |
|--|-------------------|
| For HepaScreen Business Development | |
| Frédéric Ooms, Ph.D., MBA | +32-(0)10-390 021 |
| www.sopartec.com | |
| For Corporate information | |
| Eric Halioua, CEO | +32-(0)10-390 035 |
| Eric.halioua@promethera.com | |
| www.promethera.com | |