



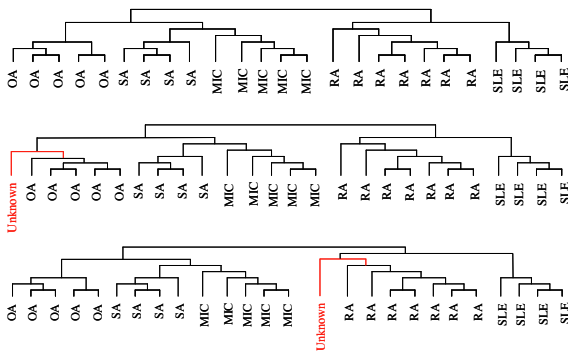
SOPARTEC

Technology Transfer Company of the Université catholique de Louvain



Sopartec, the technology transfer company of the Université catholique de Louvain (UCL), presents

A NEW TOOL FOR THE DIFFERENTIAL DIAGNOSIS OF RHEUMATIC CONDITIONS



Technology Keywords

- Arthritis, rheumatic conditions
- Differential diagnosis
- Gene expression profile

Technology Market : Arthritis

Arthritis is a common symptom of many rheumatic conditions including rheumatoid arthritis (RA), osteoarthritis (OA), seronegative arthritis (SA), infectious arthritis (INF), microcrystalline arthritis (MIC), systemic lupus erythematosus (SLE) and other systemic disorders. In many cases, the diagnosis can be established based on the clinical presentation and additional laboratory or radiological tests. However, in some cases, in particular in early disease, it can be **very hard to discriminate between these disorders** and the correct diagnosis can only be made after several weeks or months of evolution. However, it is very important to provide patients with early adequate therapy in order to achieve early remission and avoid long-term damage.

The UCL invention

Researchers at the Arthritis Unit have discovered an original arthritis discrimination test, which allows **early differentiation between several rheumatic conditions**.

The procedure is based on the analysis of **expression profiles of a particular series of genes in knee synovial biopsies** of patients with arthritis, using low-density DNA-spotted microarrays, each arthritis being characterized by a very distinct molecular signature as compared to the others. The early identification of distinct gene expression profiles in synovial tissue allows to categorize the patients in the correct diagnostic group and therefore to **deliver the suitable therapy**.

Technology Status

This work is the subject of a patent application : PCT patent application filed on 29/02/2008 and published under No. WO 2008/104608. (internal file reference number : SOP-204).

Representative References

1. Gutierrez-Roelens I and Lauwerys BR, *Curr. Mol. Med.* 8(6):551-61, **2008**.
2. Nzeusseu Toukap A *et al.*, *Arthritis Rheum.* 56(5), 1579-88, **2007**.

Sopartec would like to talk to companies interested in developing and commercializing this opportunity.

Contact

Michèle Hody, Ph.D.

Life Sciences

Tel +32-(0)10-390 051

Email m.hody@sopartec.com

Web www.sopartec.com

<http://www.uclouvain.be>

